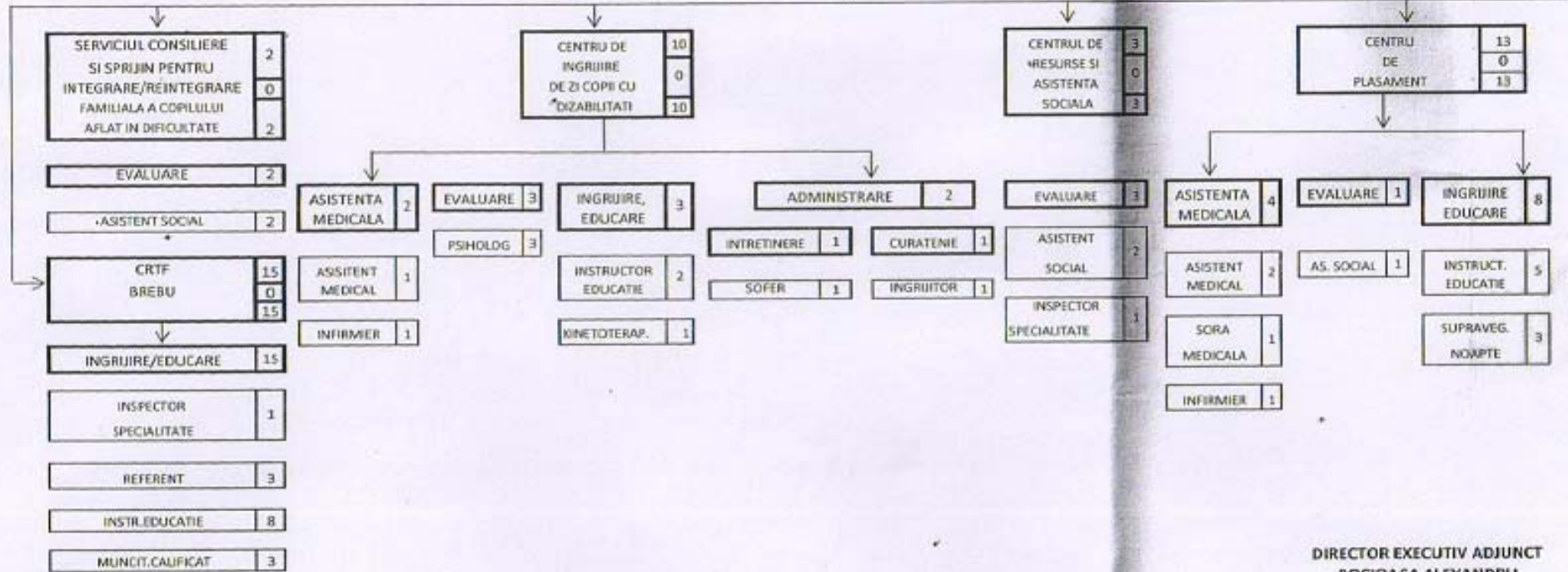
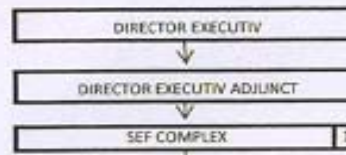


DIRECTIA GENERALA DE ASISTENTA SOCIALA
SI PROTECTIA COPILULUI PRAHOVA
COMPLEXUL DE SERVICII COMUNITARE "SF.FILOFTEIA" CAMPINA

TOTAL GENERAL	52
din care:	
Functii conducere	2
Functii executie	50



DIRECTOR EXECUTIV ADJUNCT
BOCIOACA ALEXANDRU

Se aproba
DIRECTOR EXECUTIV
FLOREA VASILICA

