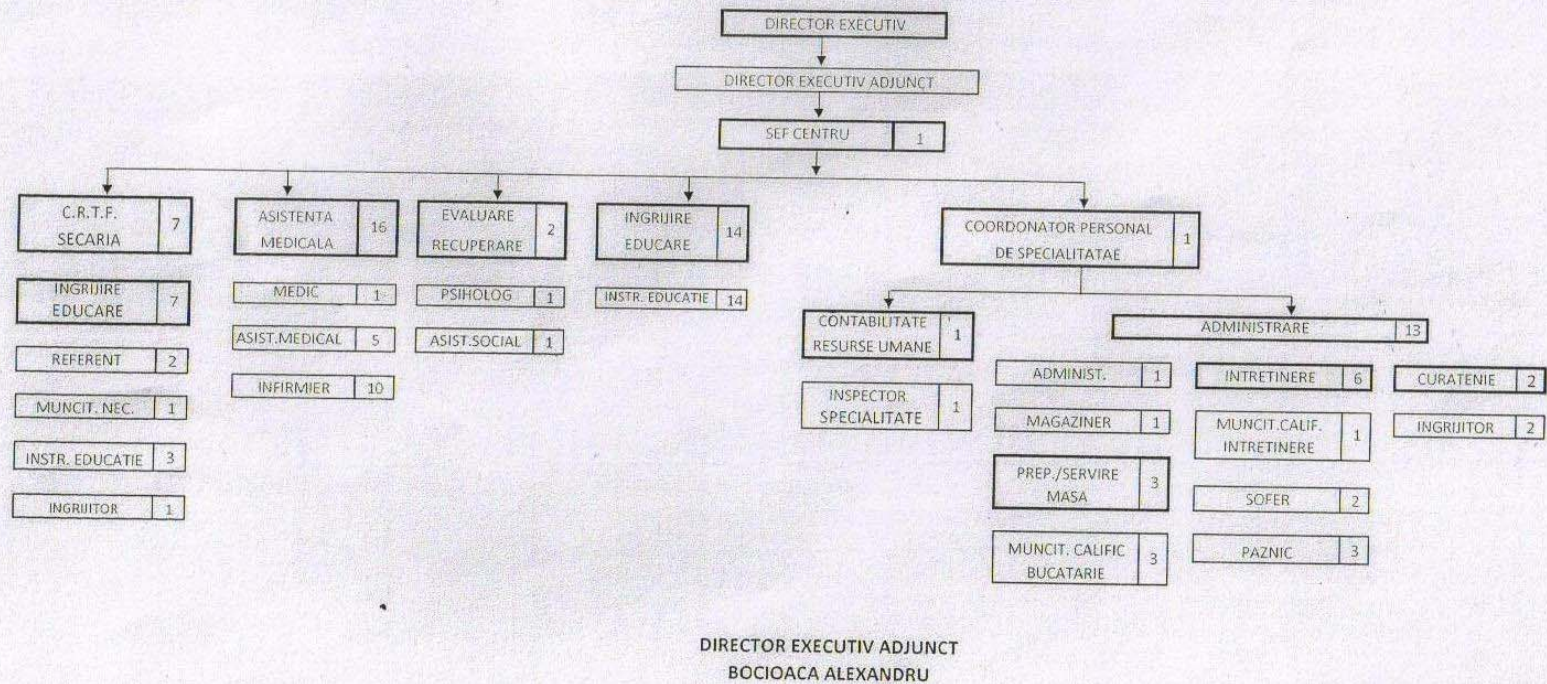


CONSILIUL JUDETEAN PRAHOVA
 DIRECTIA GENERALA DE ASISTENTA SOCIALA
 SI PROTECTIA COPILULUI PRAHOVA
 CENTRUL DE PLASAMENT
 CAMPINA

Se aproba
 DIRECTOR EXECUTIV
 FLOREA VASILICA

| | |
|----------------------|----|
| TOTAL GENERAL | 55 |
| din care: | |
| functii de conducere | 2 |
| functii de executie | 53 |

ORGANIGRAMA



Aprobata conform prevederilor Hotararii nr. 1/31.01.2012 a Colegiului Director al D.G.A.S.P.C.